



*Manaslu from above Base Camp*

## We like...

- One of the more achievable 8,000 m peaks and great preparation for Everest
- Amazing immense snow slopes (a dream for skiers and speed-riders)
- An elegant summit ridge ending with a tiny summit.
- The shortest 8,000 m expedition (32 days) for climbers with limited time
- The beautiful trek around the mountain in quiet surroundings

## Trip Facts

Elevation:	8,163 m / 26,781 ft
Location:	Nepal, Mansiri Himal region
Climbing season:	Autumn
Group Size:	1-10 people
Route:	North-East Ridge
Type of climb:	Snow / Ice / rock
Climbing Technique:	Fixed line

## Rating

Difficulty	▲▲▲△△
Fitness	▲▲▲▲△
Risk	▲▲▲△△



*Looking down from Manaslu on way to Camp 4*

## Why climb Everest with World Sherpas?

- The combined experience of clients and leading mountain guides into a single company
- A priority given to safety: procedures, training, equipment (avalanche beacon, radio, Garmin In Reach)
- A very comfortable set-up at Base Camp
- A real sharing of experience with our Sherpas throughout the expedition on climbing technique, physiology and effort management
- The use of Garmin InReach satellite systems for your family and friends to follow your progression every 10 minutes
- The production of beautiful photos and videos to always remember an extraordinary expedition
- An exceptional quality of services at the best price



See dates on website or Private Trip  
**MANASLU EXPEDITION**

## Price

US\$19,000  
 Per Person

- Deposit: 30% at booking
- Balance: 70% two months before the departure date

<i>Included</i>	<i>Excluded</i>
<ul style="list-style-type: none"> <li>• All arrival and departure transfer services to and from airport (both domestic and international)</li> <li>• Transport by jeep to Arughat Bazar and return from Simigaun by helicopter.</li> <li>• Transport of up to 2 duffle bags of a maximum total weight of 40 kgs during the trek to Base Camp and on domestic flights</li> <li>• 4 nights' accommodation at a good quality hotel in Kathmandu on B/B basis on a double basis (single option at extra cost)</li> <li>• Accommodation in lodges on a double basis during the trek</li> <li>• Accommodation in spacious individual tents at Base Camp with foam mattress, carpets, light, and storage space</li> <li>• On High Camps, accommodation in shared expedition tents</li> <li>• Qualified support team including experienced guides, cooks, and porters.</li> <li>• Three meals a day (breakfast, lunch and dinner with tea or coffee) during trek and climbing.</li> <li>• Climbing permit (900 US\$) and all fees and deposits required by the local regulations.</li> <li>• <b>1:1 Experienced climbing Sherpa per client on summit day (IFMGA Guide/Aspirant Guide)</b></li> <li>• 4 oxygen bottles with a Summit mask and regulator (Climbing guides will also be on oxygen to ensure a maximum safety)</li> </ul>	<ul style="list-style-type: none"> <li>• A summit bonus, or rather safety bonus, is due to your climbing sherpa (1,000 US\$) as well as tips to the kitchen staff and porters (300 US\$) whatever happens on the mountain. This is now a practice well established in Nepal. The total amount of US\$1,300 should be deposited in cash to the Sherpa leader in Kathmandu at the beginning of the trip. If you want to add to the standard amount at the end of the trip, it is up to you but there is no obligation.<sup>1</sup></li> <li>• Lunch and dinner in Kathmandu (except welcome dinner)</li> <li>• Extras hotel charge at Kathmandu (bar bills, laundry, additional nights)</li> <li>• Personal expenses in lodges during the trek such as battery charging (cameras, phone, laptops), showers, laundry, beverages, bottled water, and snacks</li> <li>• Additional nights in lodges during the trek were not planned by us.</li> <li>• Internet access during the trek and at Base Camp (we can arrange a Nepalese SIM card and top-up card for you at Kathmandu for calls and internet)</li> <li>• Personal trekking and climbing equipment.</li> <li>• Personal medical, travel &amp; evacuation insurance (mandatory)</li> <li>• International airfare</li> </ul>

<sup>1</sup> We want to be transparent about the price and we do not want you to spend time in discussions about tipping and possibly, have arguments about it. That is why we have excluded the standard tip / bonus from the price. If you want to add to this amount, it is your decision but there is no obligation.



See dates on website or Private Trip  
**MANASLU EXPEDITION**

<ul style="list-style-type: none"><li>• First aid medical kit</li><li>• Satellite phone at Base Camp (available to members as a paying service)</li><li>• <b>Radio set for communication with Base Camp during climbing</b></li><li>• <b>Use of a Garmin OutReach two-way satellite messaging system with satellite subscription</b></li><li>• Solar panel/generator for light and battery charger at Base Camp</li><li>• Emergency oxygen with mask and regulator at Base Camp</li><li>• Welcome dinner in Kathmandu.</li><li>• World Sherpas Duffle bag</li><li>• World Sherpas T-Shirt or buff</li></ul>	<ul style="list-style-type: none"><li>• Nepal entry visa fee</li></ul>
---	--



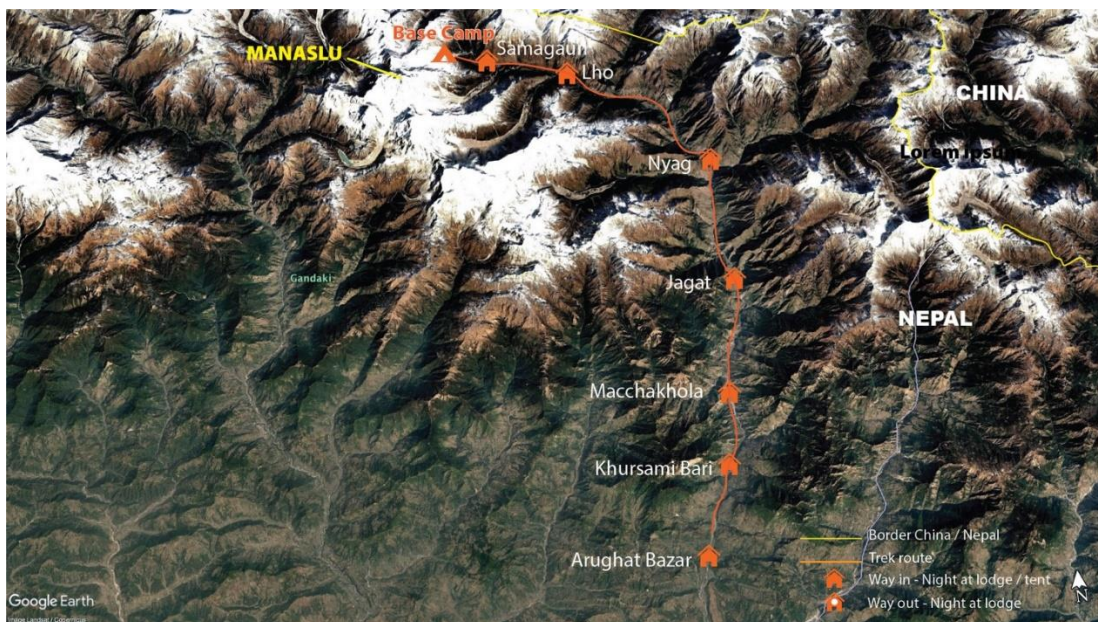
*Near Camp 2 on Manaslu*



**Manaslu Location Map**



**Manaslu Trek Route**





See dates on website or Private Trip  
**MANASLU EXPEDITION**

## Expedition Itinerary

Day	Program
1	Arrival to Kathmandu and transfer to hotel (1,350 m / 4,430 ft)
2	Preparation day for expedition in Kathmandu
3	Drive to Dharapani (1,860 m / 6,102 ft)
4	Trek to Surki Khola (730 m / 2,395 ft)
5	Trek to Bhimthang (3,580 m / 11,745 ft)
6	Trek to Samdo (3,690 m / 12,106 ft) going over the Larke Pass (5,106 m / 16,751 ft)
7	Trek to Samagaun (3,780 m / 12,402 ft)
8	Rest day in Samagaun
9	Trek to Manaslu Base Camp (4,700 m / 15,421 ft)
10-27	Climbing period on Manaslu (see detail next page)
28	Rest day and pack up Base Camp
29	Trek back to Samagaun
30	Helicopter back to Kathmandu & transfer to hotel
31	Rest day at Kathmandu
32	Transfer to airport for departure

*The itinerary is indicative and is subject to changes according to weather and mountain conditions as well as other circumstances that the climbing guide will deem necessary for the safety and / or success of the expedition.*



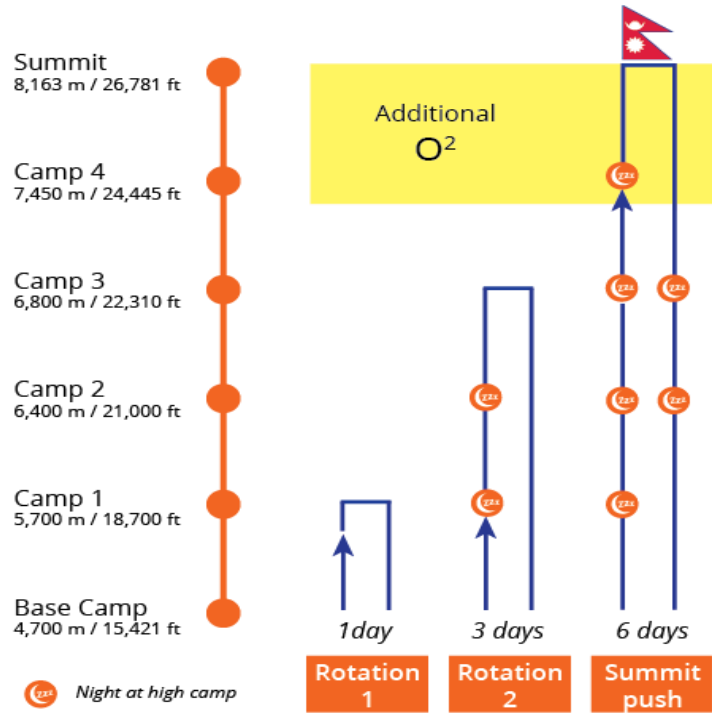
See dates on website or Private Trip  
**MANASLU EXPEDITION**

## Manaslu Climbing Route

<p>Base Camp 4,700 m / 15,421 ft ▼</p> <p>Camp 1 5,700 m / 18,700 ft 6-7 hours</p>	<p>We walk along a dirt track, over some large rock slabs to reach crampon point. This is where the fixed line starts. We move on the Manaslu glacier and travel towards Camp 1. There are some crevasse crossings along the route. Our first rotation on the mountain is to touch Camp 1 and then make the return journey (1.5 hours) back to Base Camp.</p>
<p>Camp 1 5,700 m / 18,700 ft ▼</p> <p>Camp 2 6,400 m / 21,000 ft 4-5 hours</p>	<p>Camp 1 is on the shoulder of the Manaslu glacier. This part of the climb has some similar parts to the Khumbu Ice-fall on Everest, weaving between seracs. There can be ladder crossings over crevasses along with some steep ice and snow sections. This is the most technical part of the climb.</p>
<p>Camp 2 6,400 m / 21,000 ft ▼</p> <p>Camp 3 6,800 m / 22,310 ft 3-4 hours</p>	<p>Camp 2 is set up at the top of the serac section on a quite flat section of the glacier. We travel along the upper glacier on gentle slope as we make our way towards camp 3. This is a very straight forward part of the climb and a very short section. Camp 3 is on a flat saddle just below the col.</p>
<p>Camp 3 6,800 m / 22,310 ft ▼▲</p> <p>Camp 4 7,450 m / 24,445 ft 6-7 hours</p>	<p>We move upwards along the large snow slope that starts out at an angle of 20 degrees but gradually increases to 40 degrees. As we move higher towards Camp 4, there are some short steep sections of ice and snow that we must climb. Once over this steep section, we make the exposed traverse into Camp 4 where we get some rest and prepare for the summit push.</p>
<p>Camp 4 7,450 m / 24,445 ft ▼▲</p> <p>Summit 8,163 m / 26,781 ft 7-8 hours</p>	<p>From Camp 4, the route follows a gentle slope through a succession of three plateaus. A nice steep pyramid would lead to the summits. Yes, plural because there are three summits! Bad luck, the highest is the last one of the three. No worry, it not far away! The ridge leading to the true summit is around 100 meters long. The Manaslu summit is a narrow cornice with a huge drop off</p>



## Rotations provisional plan



Manaslu Climbing Route





## Base Camp Set up

- Individual spacious tents with mattress, pillow, and light
- Toilet tent
- Shower tent (with hot water available on request)
- Mess tent for meals with table, chairs and cutlery
- Snacks / tea / coffee available during the day
- Heating of mess tent during dinner

## Communications

- Company satellite phone is available for a fee during the climb

## Notes

There are some options for the free day in Kathmandu after the trek

- Everest flight (US\$200) early departure, weather permitting
- Half day Kathmandu City tour (US\$50)
- Shopping around Thamel
- Massage & Spa



*Manaslu Camp 4*



*Climbing up towards Camp 3*



*World Sherpas very cosy and comfortable Base Camp*





*Climbing between Camp 1 and Camp 2*



*Manaslu Base Camp*